

This Survey 180

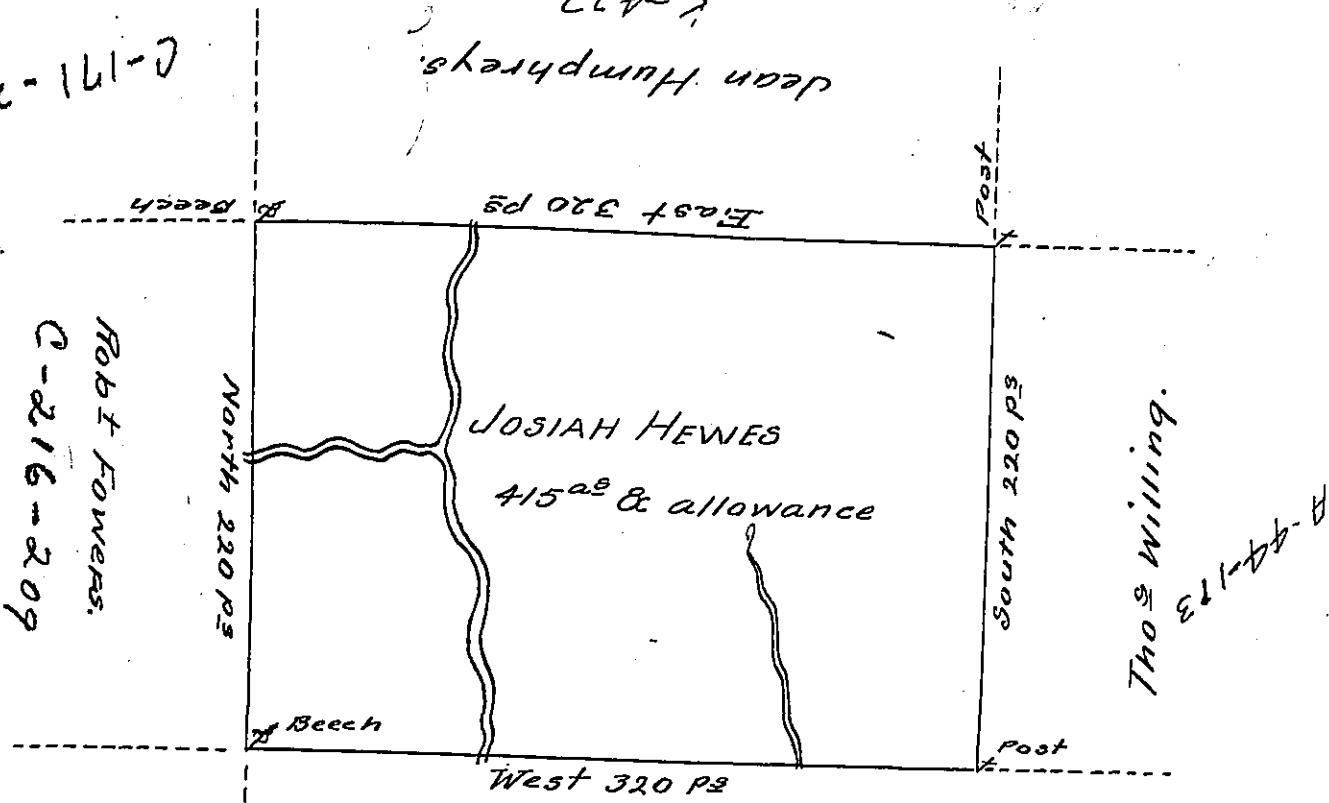
IS-UPSIDE-DOWN

C-171-249

K-433

Dean Humphreys

Robt Fowens.  
C-216-209



S-107

Willm Gray

S-106

A DRAUGHT of a tract of Land Called — Situate on the waters of  
 Appalacunn<sup>H</sup> Creek Joining Land Surv<sup>d</sup> for W<sup>m</sup> Gray & others in Stoke  
 Township North<sup>d</sup> County Containing four Hundred & fifteen acres & allo-  
 wance of Six <sup>th</sup> Cent for Roads &c. Surv<sup>d</sup> for Josiah Hewes the 19<sup>th</sup>  
 Day of July 1784 in Pursuance of a Warrant Dated the 2<sup>d</sup> Day of July  
 1784 by

W<sup>m</sup> Gray D.S.

To John Lukens Esq<sup>r</sup>

Surv<sup>r</sup> Gen<sup>l</sup>

IN TESTIMONY that the above is a copy of the original remaining on file in  
 the Department of Internal Affairs of Pennsylvania, made  
 conformably to an Act of Assembly approved the 16th day of  
 February, 1833, I have hereunto set my Hand and caused  
 the Seal of said Department to be affixed at Harrisburg,  
 this sixth day of June 1905

*Joseph R. Brown*  
 Secretary of Internal Affairs.